



Durham Rangers  
(Alexandra Park Road Stick Dance No. 22.5)

*Traditional*

A

6

9

B

14

Five in a Bed

*Andy Anderson*

$\text{♩} = 138$

A

6

B

Scottiche à Bethanie  
(Takking)

*Traditional*

A

Em C C

1 D A Bm 2 D Em

B

5 C D G C

1 D A Bm 2 D Em

## The Fool and the Bag

Jeff Bigler (2009)

$\text{♩} = 180$

A

The musical score for 'The Fool and the Bag' is written in treble clef with a key signature of one sharp (F#) and a common time signature (C). The tempo is marked as quarter note = 180. The piece is divided into four measures per line, with measure numbers 1, 5, 9, and 13 indicated at the start of each line. Chord symbols are placed above the notes: G, D, G, D7 in the first line; G, D, G, D7, G in the second line; B, G, D7, G, D7 in the third line; and G, D7, G, D7, G in the fourth line. The melody consists of eighth and quarter notes.

## Four Lane End

John Kirkpatrick

$\text{♩} = 132$

A

The musical score for 'Four Lane End' is written in treble clef with a key signature of one sharp (F#) and a common time signature (C). The tempo is marked as quarter note = 132. The piece is divided into four measures per line, with measure numbers 1, 6, 10, and 15 indicated at the start of each line. Chord symbols are placed above the notes: A in the first line; B in the second line. The melody consists of eighth and quarter notes. A repeat sign is present at the end of the fourth line, with the instruction 'last time only play 3x' written above it.

## George Green's College Hornpipe (Mr. Dolly)

*Traditional*

$\text{♩} = 114$

**A**

6 **B**

10

## Scotch Polka (Tinner's Rabbits)

*Traditional*

**A**

6 **B**

10

## The Keel Row (Woodhouse Bog)

*Traditional*

$\text{♩} = 132$

**A**

5 **B**

## Moonstruck Marrow

George Martin Fell Brown (2009)

♩ = 114

## A

Musical notation for section A, measures 1-16. The key signature is one sharp (F#) and the time signature is common time (C). The melody consists of eighth and quarter notes. Chord symbols are placed above the staff.

Measures 1-4: Bm, Em, F#, Bm, F#

Measures 5-8: Bm, Em, F#, G, F#

Measures 9-12: Bm, Em, F#, Bm, F#

Measures 13-16: Bm, Em, F#, G, F#, Bm, A

## B

Musical notation for section B, measures 17-30. The key signature is one sharp (F#) and the time signature is common time (C). The melody consists of eighth and quarter notes. Chord symbols are placed above the staff.

Measures 17-20: D, G, A, D, A

Measures 21-24: D, G, A, Bm, A

Measures 25-28: D, G, A, Bm, D, A

Measures 29-30: D, G, A, Bm, D, F#, Bm

## Over the Top

(AB)5

Jeff Bigler (2000)

♩ = 132

A

6

9

B

14

## Processional

Jeff Bigler (2011)

A

5

B

8

# I Fought The Law

(Border Crossing)

(AB)4.A

*Sonny Curtis*

**A**

4

**B**

11

14

# Charlotte's Web

*Charlotte Morgan (2009)*

♩ = 132

(AB)4.AA

6

**B**

9

14

Captain Bike  
in memory of Sheldon Brown

Jeff Bigler (2008)

**A**

Section A, measures 1-4. The music is in G major (one sharp) and common time (C). It features two staves, I and II. Staff I has a treble clef and a key signature of one sharp. Staff II has a treble clef and a key signature of two sharps. The melody in staff I consists of eighth notes: G4, A4, B4, C5, B4, A4, G4, F4, E4, D4, C4. The bass line in staff II consists of eighth notes: G3, A3, B3, C4, B3, A3, G3, F3, E3, D3, C3.

5

Section A, measures 5-8. The melody in staff I continues with eighth notes: D4, E4, F4, G4, F4, E4, D4, C4, B3, A3, G3, F3, E3, D3, C3. The bass line in staff II continues with eighth notes: D3, E3, F3, G3, F3, E3, D3, C3, B2, A2, G2, F2, E2, D2, C2.

**B**

9

Section B, measures 9-12. The melody in staff I consists of quarter notes: G4, A4, B4, C5, B4, A4, G4, F4, E4, D4, C4. The bass line in staff II consists of quarter notes: G3, A3, B3, C4, B3, A3, G3, F3, E3, D3, C3.

13

Section B, measures 13-16. The melody in staff I continues with quarter notes: D4, E4, F4, G4, F4, E4, D4, C4, B3, A3, G3, F3, E3, D3, C3. The bass line in staff II continues with quarter notes: D3, E3, F3, G3, F3, E3, D3, C3, B2, A2, G2, F2, E2, D2, C2.



# John Barleycorn

(The Drunken Idiot)

*Stan Rogers*  
words by *Jon Berger*

♩ = 76

A



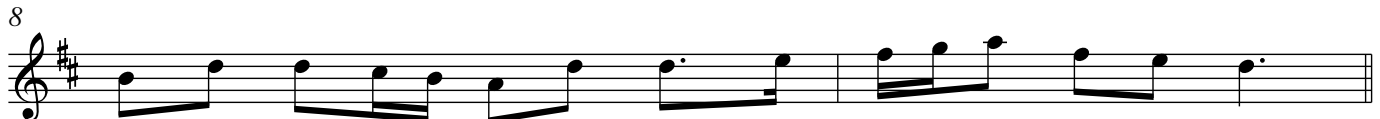
1. John\_\_ Bar - ley - corn to the sea\_\_ has gone in a ship both stout and new, the  
 2. John\_\_ Bar - ley - corn's to the court - ing gone all dressed in fine ar - ray, in  
 3. John\_\_ Bar - ley - corn's to the hang - man gone and the rea - son I'll un - fold: 'Tis for



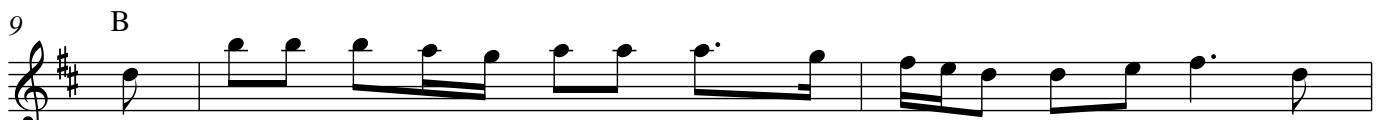
4  
 thirst to slake of\_\_ Cap - tain Drake and all\_\_ his loy - al crew. To\_\_  
 pew - ter clad from\_\_ toe to head to win\_\_ a la - dy gay. The  
 rob - bing hon - est\_\_ Eng - lish - men of their sil - ver and their gold. In a



6  
 ven - ture brave o'er\_\_ wind\_\_ and wave, the Span - iard for to halt, and  
 po - e - try that\_\_ he\_\_ dec - laims will stand him in good stead, for the  
 grave un - known by\_\_ cross\_\_ nor stone John Bar - ley will be lain, 'til the



8  
 though he die of\_\_ Span - ish grape, he'll live\_\_ as Eng - lish malt.  
 la - dies fair do\_\_ all de - clare they love\_\_ it more than bread.  
 rain - y days have\_\_ gone their ways and he ris - - es up a - gain.



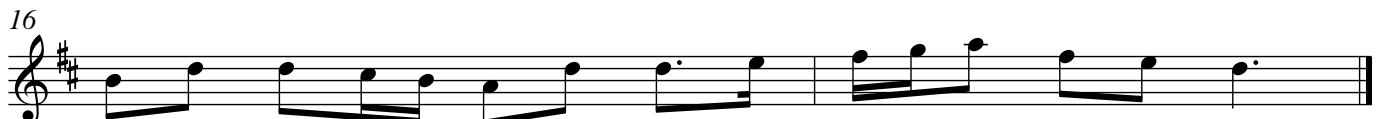
9  
 B  
 So we'll cut him down and we'll bind him round and we'll serve\_\_ him worse than that, for we'll



12  
 grind his bones be - tween two stones and we'll bung\_\_ him in a vat. Then we'll



14  
 drink his health in\_\_ nut - brown ale, and we'll raise our glas - ses high, for be -



16  
 fore that he can\_\_ live a - gain John Bar - ley - corn must die!